

BELFORT TOURISME

THE MAG #1

#StayWildBelfort

TOP MUST-SEE
BELFORT ATTRACTIONS

P.08

FIVE OF OUR
FAVOURITE WALKS

P.12

RELAXING
BY THE WATERSIDE

P.14

FREEWHEELING
ACROSS BORDERS

P.20

Belfort
Tourisme



#TERRITOIREDELION



#Bytrain

TGV Belfort-Montbéliard station
TER Belfort city station
 1 ¼ hours from Strasbourg
 2 ¼ hours from Paris or Lyon

#Bycar

A36 Motorway
 Stuttgart-Lyon axis

#Byplane

EuroAirport
Basel-Mulhouse-Freiburg
 45 minutes away



← Follow us !

Le Mag #1 édition 2020 par Belfort Tourisme

Directeur de la publication : Claude Joly / Conception : Belfort Tourisme - Katharina Buet

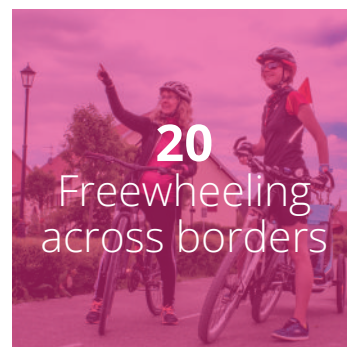
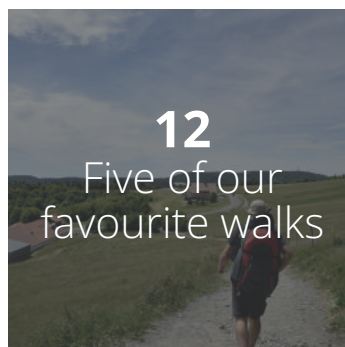
Réalisation : Belfort Tourisme - Elodie Cayot / Impression : Schraag

Crédits photo : Elodie Cayot / JFL - CD90 / Vincent Thiebaut / Benoit Grebaux / Infra Massif des Vosges
 Territoire de Musique / FIMU / Alexandre Baehr / Dorine Maillot / Philippe Martin / Maeva Schamberger
 Philippe Mercier / Jean Becker / Denis Bringard / Icons from www.flaticon.com & www.freepik.com / Pays de Montbéliard Tourisme / G.VIEILLE, la chapelle Notre-Dame du Haut, Ronchamp©ADGP, 2014, Paris
 Etienne Kopp / Audrey Delattre Document non contractuel. Les informations présentes dans ce magazine
 sont valables à l'heure où nous le rédigeons. Toutefois, nous ne prétendons pas être exhaustifs. Ainsi, des
 erreurs ou omissions pouvant s'être glissées dans cette revue, n'hésitez pas à nous les signaler.



CONTENTS

- 4** Our top tips for your stay
- 7** Did you know?
- 10** A mountain of activities
- 16** Unmissable festivals
- 18** A kaleidoscope of colours
- 22** Gourmet food & specialities
- 24** A vibrant art and cultural scene
- 26** Holding the fort
- 28** Kids corner
- 30** Picturesque towns and villages
- 32** Flower power
- 34** The year's highlights
- 36** Address book
- 40** Sport & leisure
- 44** Further afield
- 46** Things to do on a rainy day
- 47** The Tourist Information Centre



OUR TOP TIPS TO MAKE THE MOST OF YOUR STAY



Belfort_Tourisme #Delle #Colors



Belfort_Tourisme #Ballondalsace



Belfort_Tourisme #LiondeBelfort



Belfort_Tourisme #Francovelosuisse



Belfort_Tourisme #PorteDeBrisach



Belfort_Tourisme #Malsaucy



A DAY TRIP ON TWO WHEELS

On the francovélosuisse

Morning

Leaving Belfort and cycling South to Switzerland across beautiful, scenic landscapes.

Lunch

Stopover in Delle. Lunch next to the Cariatides House and visit of the old town.

Afternoon

Cycle to Porrentruy. Visit of the town and its varied architectural styles – gothic, baroque and neo-classical. Ride back to Belfort.



For more information:
www.j3l.ch/en/Z10794/porrentruy

Distance: 40 km

Level of difficulty: Average

A DAY OUT BACK IN TIME

Belfort's Old Town and Citadel

Morning

Vauban's fortified town

City map in hand, visit of the old town and fortifications.



Pick up a leaflet at the Tourist Information Centre or download the Belfort Discovery Trails from www.belfort-tourisme.com

Lunch

Lounging on a terrace or inside one of the cosy cafés and restaurants.

Afternoon

The Citadel and Bartholdi's Lion

Walk up, or take the tourist train in high season, to the Citadel. Enjoy the 360° view of the city and the mountains from the Panoramic Terrace, and go on the Augmented Reality Tour in the ditches.

#PicOfTheDay: A selfie with Bartholdi's famous Big Cat.



HALF A DAY IN THE MOUNTAINS

Hiking in the Ballon d'Alsace

Morning

Using the Viewpoints Circular Walk leaflet as a guide, discover an area of outstanding natural beauty. Enjoy the spectacular view over the Vosges and the Jura mountains, the Swiss Alps, the nearby valleys and the lakes.

Lunch

Picnic al fresco or lunch at La Chaumière restaurant.

Distance: 10.2 km

Level of difficulty: Difficult



A WHOLE DAY WITH NATURE

The Malsaucy Peninsula

Morning

With the Lakes Circular Walk leaflet in hand, follow the waymarked path and wander past many streams and ponds.

Distance: 9.5 km

Level of difficulty: Average

Lunch

Lunch with a view at the waterside Auberge du Lac. Terrace available in summer.

Afternoon

Chilling on the beach, taking part in a waterside activity or visiting the nature conservation centre – the choice is yours!



54,000
FLOWERS & PLANTS
EMBELLISH THE CITY

250 KG
OF CHOCOLATE

MAKE THE LIFELIKE LION
AT PUREMENT CHOCOLAT'S



FROM NORTH TO SOUTH
ACROSS THE TERRITOIRE DE BELFORT

50 KM
3 HOURS BY BICYCLE



1,000 KM OF
MARKED TRAILS
IN A 609 KM² DEPARTMENT



DID YOU
KNOW ?



#BELFORTYOU♥



19 FORTS
TO PROTECT THE CITADEL

BELFORT & GIROMAGNY



2 TOWNS LABELLED
HISTORICAL SITE OF THE
GRIMALDIS OF MONACO

300,000
GLASSES OF BEER



DRANK BY THE EUROCKÉENNES
FESTIVALGOERS

146 STEPS
TO WALK UP TO THE LION



TOP MUST-SEE ATTRACTIONS IN BELFORT



THE CITADEL

Vauban's Impregnable Citadel underwent many transformations from the Middle Ages to the 19th century. A vaulted tunnel and a drawbridge gate lead to the main courtyard, the Panoramic Terrace and the History Museum. The Citadel's Augmented Reality Tour includes a visit of the ditches and an exploration of the Grand Souterrain – a former ditch covered by Vauban in 1749 that could shelter over 1,000 men.




The breathtaking 360° view from the Panoramic Terrace.

BARTHOLDI'S LION

The famous and majestic icon, built against the rock face, has been watching over the city for over 140 years. Bartholdi's Lion is an awe-inspiring monument and a memorial to Belfort's resistance during the siege of 1870-1871.




 Dare to go on an urban safari! The Lion has more than 100 cubs hidden throughout the city. Pick up the leaflet and set off on a quest to find them.



A BLEND OF OLD AND NEW

The city of Belfort underwent many changes in urban planning from the Middle Ages to the beginning of the 20th century. A walk from the old to the new town will take you through a diverse mix of architectural styles.

 The Little Tourist Train combines a historical tour of the city and a stopover at the Citadel.
More information from:

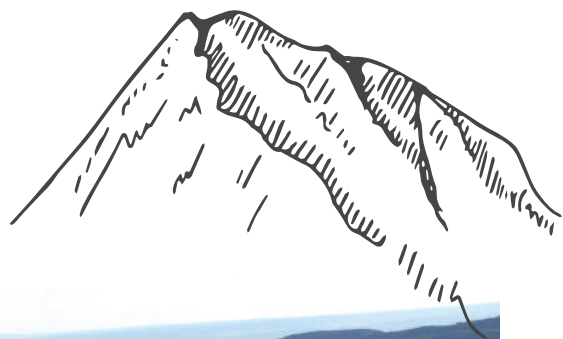


ETANG DES FORGES

A haven of peace can be found at the foot of the iconic Miotte Tower, minutes away from the city centre. The 84-acre pond was created in the Middle Ages to palliate water shortages and it was later used to power the local forges.



A MOUNTAIN OF ACTIVITIES



BALLON D'ALSACE

The Ballon d'Alsace is the Territoire de Belfort's highest point, rising 1,247 m above sea level. It is a protected Natura 2000 site nestled in the Ballons des Vosges Natural Regional Park and a paradise for outdoor activities – hiking, cycling, skiing and a lot more.

🗨️ INTERVIEW WITH A MOUNTAIN GUIDE

I am very fortunate to be working in this beautiful nature reserve. We are at a crossroad between Germanic and Latin civilisations, where untamed nature meets History. I was born in Belfort and the Ballon d'Alsace was my first mountain experience. I've been exploring it for 40 years, rain or shine, and I have come to discover many of its hidden gems.



OLIVIER POHL

SNOW RESORT AND WINTER ACTIVITIES

In the winter, the snow resort boasts 10 downhill skiing slopes, 40 km of marked cross-country skiing tracks, 5 snowshoeing trails, a sledding area and a snowpark.



Adventure seekers will go on a dog sledding tour with an experienced musher for an unforgettable mountain experience!



YEAR-ROUND WONDER AND QUIETUDE

Throughout the year visitors can enjoy the pure mountain air and outstanding 360° panorama over the surrounding crests, the valleys and the lakes, and even the Alps. Let yourself be amazed by nature's awe-inspiring beauty.



ADVENTURE SPORTS FOR ALL

Rambling or hiking on GR routes, mountain-biking, hang-gliding or going on a treetop adventure are just a few of the activities you can do here. When spring comes, cyclists get on their racing bikes again and set off to climb the legendary mountain pass. The Ballon d'Alsace is one of only 7 passes in France labelled Tour de France Historical Route.

Whether you are interested in day-hiking or thru-hiking, the Ballon d'Alsace has the path for you. Long-distance hiking trails GR5 and GR59 run across it, while GR7 has its starting point from here.



FIVE OF OUR FAVOURITE WALKS



The Territoire de Belfort offers a plethora of hiking possibilities with over 1,000 km of marked trails across varied landscapes and terrains. So why not combine a great outdoor workout with the pleasure of being in beautiful, natural surroundings?

♥ GET THE GUIDE

Trails and walks leaflets can be picked up at the Tourist Information Centre or downloaded from www.belfort-tourisme.com



THE VIEWPOINTS CIRCULAR WALK BALLON D'ALSACE

A day-hike starting from the top of the Ballon d'Alsace which offers breathtaking views of the Vosges mountains, the Jura and the Swiss Alps. Those who prefer a shorter option will do the 2.6-km walk on the plateau, past the statues of Joan of Arc and the Virgin Mary on the top.

Distance: 10 km - Level of difficulty: Difficult

THE REMEMBRANCE CIRCULAR WALK AUXELLES-HAUT

Starting from the charming mountain village of Auxelles-Haut, the trail takes you through beautiful natural scenery past many WWII memorials. These keep alive the sacrifice of the men and women of the Resistance who were killed in the maquis by the Germans.

Distance: 12 km - Level of difficulty: Difficult

IN THE TERRITOIRE DE BELFORT

IN THE FOOTSTEPS OF FRÉDÉRIC JAPY BEAUCOURT

Sur les traces de Frédéric Japy

Beaucourt was a 19th century industrial landmark and the epicentre of the industrialisation process in Franche-Comté's north-eastern part. The town's birthchild, Frédéric Japy, was one of the first captains of industry. The walk combines history with bucolic nature settings.

Distance: 6 km - Level of difficulty: Moderate

HAUTS DE BELFORT CIRCULAR WALK

The walk takes you along the fortifications to the Belfort Heights, only minutes away from the city centre. An amazing panorama over the city and the Vosges can be enjoyed from the heights.

Distance: 7 km - Level of difficulty: Moderate



THE LAKES CIRCULAR WALK MALSAUCY SITE

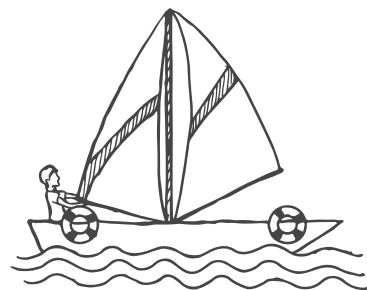
An easy walk, with beautiful views of the mountains, that will take you past many streams and ponds. Those who prefer a shorter walk can opt for the 1½-hour Tour de la Véronne Circular Walk between the two main ponds.

*Distance: 7.6 km
Level of difficulty: Easy*



#RANDO #NATURE

RELAXING BY THE WATERSIDE



THE MALSAUCY PENINSULA

From the quiet of autumn and winter to the buzz of the high season, the Malsaucy is a beautiful nature spot throughout the year. Accessible paths are open to walkers, cyclists and people with reduced mobility. A dedicated bird-watching trail, with hides around the pond, allows walkers to get closer to the site's wildlife.



THE BEACH AND WATER PARK

In the summer the 4,000 m² sandy beach is open to all, with guarded swimming from June to September. The children's playground and a full schedule of events guarantee fun times and excitement for people of all ages, with something new every year. So why not go on the giant swings or try your luck at the mini-golf or on the boules court, unless you prefer a watersport activity like stand-up paddling, windsurfing, canoeing or riding on a pedalo?



RECHARGING IN NATURE

The 4.5-km trail around the Véronne pond is wheelchair-accessible and can also be walked with a pram or a buggy. The nature conservation centre (Maison Départementale de l'Environnement) on the banks of the Malsaucy pond showcases free exhibitions and events from March to November. Conferences, workshops and outings provide visitors with a better understanding of our environment and how to take care of it.



THE BIRD WATCHING TRAIL

Forty-nine protected animal species and 8 endangered plant species live on the site. These include swans, ducks, herons, ospreys, toads, loaches and some rare plant species. The local authorities have installed some observatories around the two main ponds so that nature can be watched without being disturbed. The trail provides an enjoyable, educational and natural wildlife experience for visitors of all ages.



UNMISSABLE FESTIVALS



EUROCKÉENNES – BEST FESTIVAL IN THE WORLD!

For more than 30 years the Malsaucy site has been welcoming one of Europe's major music festivals – Eurockéennes. Every first weekend of July, thousands of people gather to revel in the party atmosphere of the peninsula, in an exceptionally beautiful, natural setting. Join them and discover a great line-up, unpredictable weather, lots of unsuspected gems and an unforgettable 3-day experience!



*Eurockéennes won the
Best Festival Award
at the 26th Arthur Awards
2020 in London*



FIMU #KIDS STREET FESTIVAL

The lesser known International Festival of University Music welcomes over 1,700 musicians from 40 countries, for more than 200 free concerts over 5 days in Belfort's old and new town.

★ FIMU and Eurockéennes are inclusive festivals

ENTREVUES #KIDS FILM FESTIVAL

Entrevues, the International Festival for First Film and Independent Cinema, has been running in Belfort for over 30 years. It is a platform for audacious cinematography of past and present, through its 2 main activities: a competition for début creations and wide-ranging retrospectives highlighting cinematic heritage.

LIVING HISTORY #KIDS FESTIVAL

The Citadel's Living History Festival takes visitors on a time travel through different periods of history. It is suitable for all ages and provides a dedicated area with educational games for children.

🗨️ INTERVIEW WITH THE EUROCKEENNES' MUSIC DIRECTOR

I was born in Belfort and have many good friends here. It's a no-frills, down-to-earth place with straightforward people. The lively cultural scene includes two major music festivals, a film festival, a national theatre, a choreographic centre, a venue for new music, a puppet theatre and more. The proximity with Switzerland and Germany makes it possible for us to have an impressive concentration of cultural events within a small area.



KEM LALOT

A KALEIDOSCOPE OF COLOURS



Belfort may be an industrial city and a former military town, but this does not mean, however, that it is dull. Quite the contrary! We invite you to download or pick up the city map at the Tourist Information Centre or simply wander freely and discover the many shades of the local palette.

The city's colour scheme and the colourful façades have an Italian feel. The local sandstone, with its many shades of pink, can be seen on many architectural masterpieces and is sublimated in the city's famous icon –

Bartholdi's Lion.

The Territoire de Belfort is an award-winning Floral Département in recognition for its plant heritage, landscape preservation and houses in bloom. These contribute to making

Ouvert du 1er avril au 31 octobre

Aux portes de l'Alsace, du Parc Naturel Régional des Ballons des Vosges et de la Suisse.
Aux abords de l'Étang des Forges, à l'écart de la ville de Belfort classée Territoire de Vélo.



CAMPING DE L'ÉTANG DES FORGES ***



Tel : +33 (0)3 84 22 54 92 - contact@camping-belfort.com
www.camping-belfort.com



FREEWHEELING ACROSS BORDERS



FRANCOVELOSUISSE

Change of scenery guaranteed along the 40-km cross-border cycle route that links the city of Belfort and the town of Porrentruy in the Swiss Jura. Seven loops along the main route offer shorter cycling options for all levels. Together, this amounts to more than 300 km of marked routes, catering for leisurely or sporty rides.

EUROVELO 6

The 3,600-km European cycle route from the Black Sea to the Atlantic Ocean passes through the Territoire de Belfort, following the Rhine-Rhone Canal from east to west. Whether you are going on a casual ride or cycle touring, you will enjoy a sense of unbridled freedom as you cycle on the Eurovelo 6 within and beyond our borders.

OTHER GREEN ROUTES

The 25-km **Coulée Verte** along the Haute-Saône canal links Belfort and Montbéliard. To the north, the 7-km **Promenade François Mitterrand** goes from Belfort to the Malsaucy site, where you can join the 8-km **Liaison Nord Territoire** to Giromagny at the foot of the Ballon d'Alsace.

TOUR DE FRANCE LEGENDARY PASS

The Ballon d'Alsace was the race's first ever mountain pass in 1905. Eleven signposts along the way provide all the technical details required to climb this official Tour de France Historical Route. And if that is not enough you can always go on to climb the Great Loop's other local, mythical pass, the much-feared Super Planche-des-Belles-Filles!



♥ BELFORT IS A
BIKE-FRIENDLY CITY

Pick up the cycle map at the Tourist Information Centre or download it from www.belfort-tourisme.com

NOT FOR THE FAINT-HEARTED

Bike racers who want to push the boundaries of their fitness can test their endurance on an extreme bike challenge: climbing the three routes that lead to the Ballon d'Alsace in one day. This means 102 km and 2,130 m height variation in total. Try to beat the record, get your certificate and earn a place in the Ballon d'Alsace's Aces Club (Club des As)! *For more information:* www.cyclobelfort.fr



THRILLS GUARANTEED OFF THE BEATEN PATH

Fourteen off-road biking tracks are available throughout the Territoire de Belfort. These cater for all levels and can be explored alone or with an experienced guide.

Maps and GPX trails can be downloaded from www.belfort-tourisme.com

The TrailCenter on Mount Salbert offers various downhill trails. Safety equipment is strongly advised.

★ *Those who want to get more out of their off-road biking experience can book a course with a guide.*

For more information:
endurodulion.com/actb-enduro-school



GOURMET FOOD & AND LOCAL SPECIALITIES



EATING OUT IN THE CITY OF THE LION

The Territoire the Belfort is a culinary melting pot where you will find traditional Alsace sauerkraut and Pinot Gris wine alongside typical Franche-Comté specialities like Montbéliard and Morteau sausages, Comté, Morbier and Cancoillotte cheeses. The Lion is never far away in Belfort and many recipes bear his name, e.g. a smoked sausage, a bread loaf, chocolates and even a beer. Bon appétit!

THE MOST BEAUTIFUL COVERED MARKET IN FRANCHE-COMTÉ

The Fréry covered market stands out with its impressive steel, glass, cut stone, brick and ceramic architecture. It was designed by Eugène Lux and built in 1905 by the Parisian firm Schwartz and Meurer, builders of the Grand Palais and Monumental Green Houses in Paris. Further information on market days, and a list of the other local markets, can be picked up at the Tourist Information Centre or downloaded from www.belfort-tourisme.com

RECIPE IDEA



CAQUELON (SKILLET) FROM LA CHAUMIERE RESTAURANT

PREPARATION TIME: 20 MINUTES
COOKING TIME: 30 MINUTES

*Ingredients: 350 g potatoes • 150 g onions and smoked bacon, mixed
100 g Reblochon cheese • 100 g Munster cheese • 80 g smoked sausage
135 g liquid cream • Olive oil • 1 glass of Jura wine*

1. In a skillet, sauté the onions and the diced smoked bacon in olive oil until the pan gets dry, and add the wine. Reduce on a low heat and keep on the side.
2. Cut the cheese into 4 mm-thick slices. Keep on the side.
3. Slice the smoked sausage and keep it on the side.
4. In a thick cast-iron or earthenware baking dish lay the diced potatoes, top with a generous table spoon of onion and bacon mix, then some sliced sausage and a layer of cheese. Repeat with alternate layers of Reblochon and Munster.
5. Pour the liquid cream over the whole dish.
6. Bake the gratin in the oven at 180°C for 20 to 30 minutes.

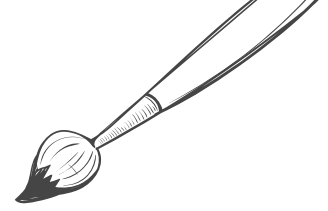


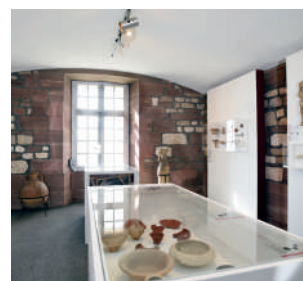
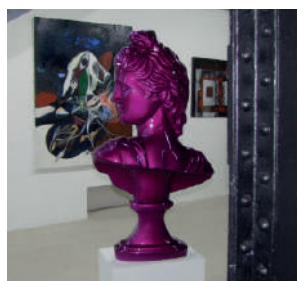
LIMITED EDITION
CANCOILLOTTE
#EUROCKS



The local, legendary Cancoillotte cheese was taken to new heights by Master Cuisinier de France Fabrice Piguet. His recipe includes plants from the #Eurockéennes festival site, i.e. meadowsweet, lanceolate plantain and elderberry, seasoned with Guérande salt and Penja pepper. The result is a gourmet version of an otherwise traditional cheese. Available for sale at the Belfort Tourist Information Centre.

A VIBRANT ART AND CULTURAL SCENE

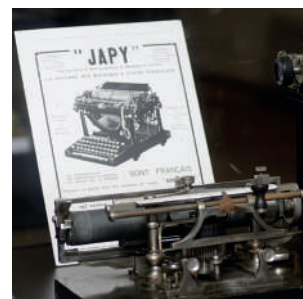




IN BELFORT



Belfort's museums are not to be missed, they boast fine collections of art and artefacts. To make the most of your stay in the city, be sure to visit the **History Museum**, the **Fine Art Museum**, **Tower 46's** temporary exhibitions and the **Modern Art Museum – Donation Jardot**. In the new town, **Galerie Cheloudiakoff** specialises in contemporary and street art, while the **Théâtre de Marionnettes** boasts one of Europe's largest puppet collections (visible March to June) and offers great puppet shows for all ages throughout the year.



AROUND BELFORT

Espace multimédia Gantner in Bourogne is labelled Contemporary Art Centre. It houses France's largest collection of digital art and showcases exhibitions and workshops throughout the year. The rural crafts and traditions of our ancestors are well preserved in various, smaller museums: Brebotte's **Musée de l'Artisanat et des Traditions** (crafts and trades), Bontans' **Musée Agricole départemental** (farmhouse) and Etueffont's **Forge Museum**. You can also revisit some 17th to 19th century technologies at the **Moulin de Courtelevant** (windmill) and the **Japy Museum** – two sites that bear testimony to a region that always was at the forefront of industry. For additional information on opening days and seasonal events, please contact the Tourist Information Centre or look up www.belfort-tourisme.com

HOLDING THE FORT MILITARY HERITAGE



THE FORTIFIED BELT

The Belfort Gap, as it is known, had always been a highly strategic, military centre since the Middle Ages as it was the only plain linking the valleys of the Rhine and the Danube, with that of the Rhone. A fortified belt with 19 forts to protect the city was designed by General Séré de Rivières and built between 1873 and 1911.

FORT DORSNER IN GIROMAGNY

Since the year 1880, 600 men had been posted in the fort which was equipped with long-range artillery. It was requisitioned by the Germans during WWII and partly destroyed. A dynamic group of volunteers has been renovating the fort since 1990. Open Wednesday & Sunday afternoons, July to September.

☀️ *Night-time guided tours with petrol lamps are organised in summer.*

FORT ORDENER IN VÉZELOIS

This is one of the most impressive works of the fortified belt, built between 1883 and 1886. Because of its strategic location and impressive size its main role was to protect the communication routes and the other forts. Guided tours are available in summer.

☀️ *Trick or Treat on Halloween's Horr'Ordener Night.*

FORT SÉNARMONT IN BESSONCOURT

The fort which had accommodated 650 men in 1886 became obsolete two years later. Large-scale modernisation works started in 1888, bringing the fort to the forefront again. It was used until 1914 and during WWII all its metal was used for scrap. Guided tours are available on certain dates and by appointment.

☀️ *Family-friendly events are organised in the fort throughout the year.*

FORT DES BASSES PERCHES IN DANJOUTIN

A single redoubt on the site used to protect the Citadel during the 1870 siege. The current fort was built in 1877 and could accommodate 182 men. Considered a secondary fort it was never modernised. All its metal was used for scrap during WWII. The view of the Citadel's glacis from the fort is stunning.

☀️ *Guided tours are available in summer.*

THE SECRET NATO FORT IN CRAVANCHE

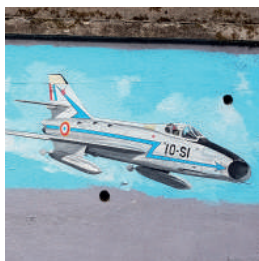
For a long time classified information surrounded this secret NATO fort, worthy of a James Bond film. Guides from the voluntary ATOMES association now take visitors on guided tours and a journey back to the days of the Cold War.

☀️ *Guided tours are available on European Heritage Days and on set dates with the Tourist Information Centre.*

THE FORTS ON THE BELFORT HEIGHTS

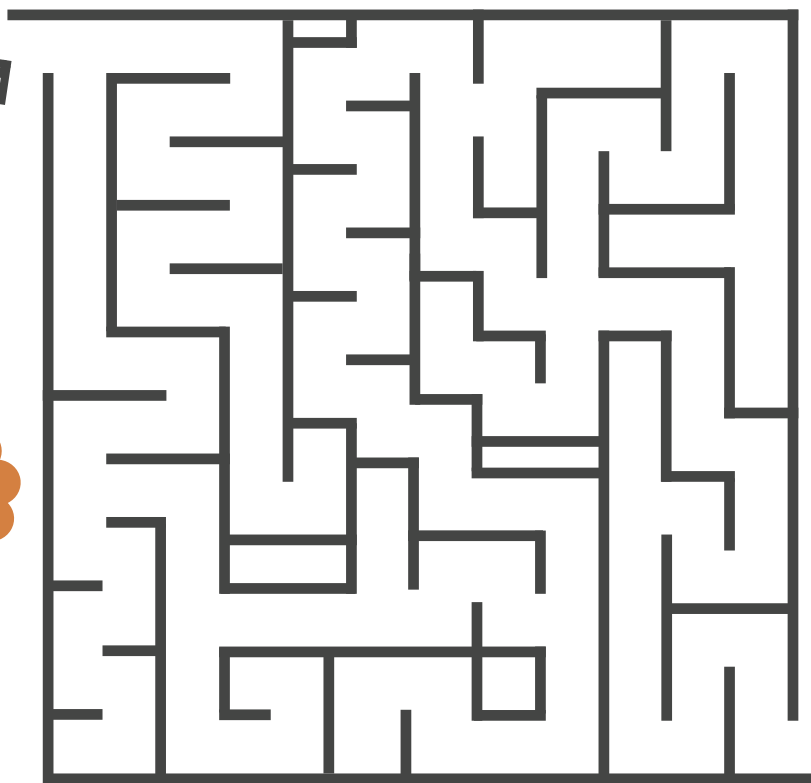
Climbing the two hills overlooking Belfort combines a pleasant walk and an amazing view, with history. The two forts – Miotte and Justice – on the two hills with the same names, and the nearby Vallon Gate, take you back to the city's military past.

☀️ *Guided tours of the forts on the Belfort Heights are available in summer.*



KIDS CORNER

HELP PAPA LION REUNITE
WITH HIS CUB!



#KIDS

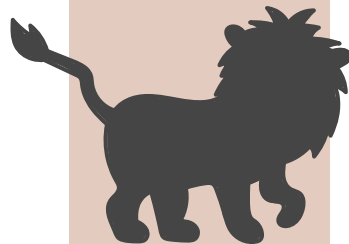
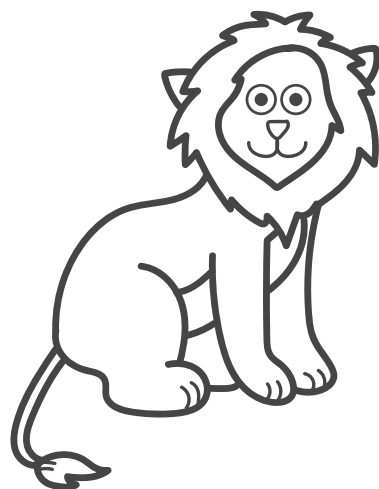
The Greater Belfort area was awarded the label Famille Plus. A booklet listing all the facilities and services available for families can be picked up at the Tourist Information Centre. For more information:
www.belfort-tourisme.com

*Easter Weekend is Kids Weekend
in Belfort – come and join us!*

JOIN THE DOTS
TO FINISH THE
DRAWING



WHERE IS LEO'S SHADOW?



1



2



3

PICTURESQUE TOWNS AND VILLAGES



FROM NORTH TO SOUTH

In the Giromagny district, the rounded summits of the Vosges shape the landscape to the north while the southern Sundgau is more akin to the plains of Alsace. Add to this a few legends and local curiosities and you have a land waiting to be discovered off the beaten track.

ROUGE GOUTTE

The picturesque 4-Star Village in Bloom at the foot on Mount Fayé is full of charm year-round. Its well-preserved heritage includes a small church dedicated to Saint-George and a very old lime tree dating back to 1578. The stream that runs through the village is called the *rouge goutte* (the red stream) because of the colour of the water as it runs through the sandstone bed.



GIROMAGNY

Giromagny, at the foot of the Ballon d'Alsace, was a major mining centre in the 14th century and a unique industrial hub in the 16th century. Today the Miners Circular Walk and the Fountains Trail take visitors on a journey back to the area's mining past and the birth of the town's quarters.



DELLE ON THE SWISS BORDER

Delle is the second most populated town after Belfort, situated on the Franco-Swiss border. The town used to be fortified and has retained a lot of its period charm with its remparts, towers and turrets. Listed Historical Monuments include the Cariatides House, the former Feltin House, the Turrets and the Remparts Houses.



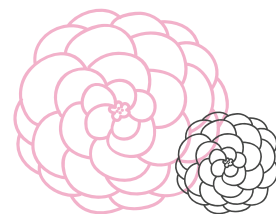
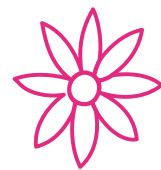
AROUND SAINT-DIZIER-L'EVÊQUE

The land here is shrouded in mystery. Saint-Dizier's cenotaph in the church, commonly known as the Madman's Stone, was reputed to cure many mental ailments. In Villars-le-Sec traces of the fight between Saint-Dizier and the Devil can be seen in the area known as Pas du Diable, or the Devil's Footsteps.





FLOWER POWER



TOWNS AND VILLAGES IN BLOOM

The Territoire de Belfort may be France's smallest département, yet it boasts the country's highest percentage (42%) of Towns and Villages in Bloom. Credit goes to the local municipalities, the volunteers and the local population's relentless efforts and commitment to preserve the local plant heritage and make their surroundings beautiful and welcoming.



INTERVIEW WITH THE REGIONAL ASSESSOR, TOWNS AND VILLAGES IN BLOOM

The local authorities in the Territoire de Belfort, along with teams of workers and volunteers, all come together to preserve the natural heritage and improve their surroundings, with a flawless dedication. Growing plants and flowers, and caring for nature become all the more worthwhile when you know that they will contribute to enhancing people's living environment, local official buildings and private homes.



SYLVIE VOGEL

TERRITOIRE DE BELFORT – A FLORAL DEPARTMENT

The county authorities have been fully committed to improving the people's living spaces and preserving the natural heritage for many years. They are leaders in the field and are able to advise, support and accompany the local villages in their choice of investment projects and schemes to improve attractiveness. It was awarded the label Département Fleuri for five years.



REGIONAL AWARD-WINNING TOWNS AND VILLAGES



Belfort
Rougegoutte



Anjoutey
Argiésans
Bavilliers
Delle
Etueffont
Lacollonge
Montreux-Château
Recouvrance



Autrechêne
Cravanche
Danjoutin
Fontaine
Fontenelle
Novillard
Pérouse
Phaffans
Romagny-sous-Rougemont
Saint-Dizier-l'Évêque
Thiancourt
Vétrigne



Bermont
Chavanatte
Cunelières
Evette-Salbert
Denney, Dorans
Eguenigue
Fêche-l'Eglise
Florimont
Foussemagne
Giromagny, Grosne,
Lachapelle-sous-Rougemont
Moval, Offemont,
Petitefontaine,
Reppe
Urcerey, Valdoie



THE YEAR'S

FEBRUARY



Convention Necronomi'con

Andelnans - Geek & Japan convention

GéNéRiQ

Belfort and around – Music festival

OGNI Challenge

Ballon d'Alsace - Wacky costume and themed-sled race

MARCH TO DECEMBER

The Belfort Flea Market

(1st Sunday of the month) Belfort

The largest flea market in eastern France *Free*

APRIL

Enduro du Lion

Belfort - Off road bike race



SoLocaux

Belfort - A week of exciting events at the Tourist Information Centre

MAY

Triathlon de Belfort

Malsaucy Site



FIMU

Belfort - International Festival of University Music *Free*

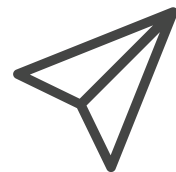
JUNE

Festival des Tourelles

Morvillars - Classical and jazz music festival



HIGHLIGHTS



JULY & AUGUST

Eurockéennes de Belfort

Malsaucy site – International music festival



Festiv'été

Belfort – Family-friendly summer events *Free*



Living History Festival

Belfort – Historical reenactments *Free*

Flâneries d'été

Territoire de Belfort – Family-friendly events *Free*

Festival Fort en Musique

Giromagny - Music and poetry festival

SEPTEMBER

The Lion's Half-Marathon

Belfort/Montbéliard

OCTOBER

Foire aux livres

Belfort – Largest book fair in eastern France *Free*

Belfortrail & Girotrail

Giromagny - Trail race

NOVEMBER



Entrevues - International Film Festival

Belfort

New and independent film directors' competition

DECEMBER

Le Mois Givré

Belfort - Winter fun and festive events for the family
Free



*Agenda des animations
is the calendar of events
to stay informed!
Look it up online or
subscribe to the news-
letter*

ADDRESS BOOK

MUSEUMS



IN BELFORT

Musée d'Art Moderne – Donation Jardot

8 Rue de Mulhouse
+33 (0)3 84 54 27 57

Le Musée des Beaux-Arts

Rue Georges Pompidou
+33 (0)3 84 54 27 87

Musée d'Histoire et Espace Bartholdi

The Citadel, main courtyard
+33 (0)3 84 54 25 51

Tour 46

Temporary exhibitions - Rue Bartholdi
+33 (0)3 84 54 25 46

AROUND BELFORT

Forge Museum

2 Rue de Lamadeleine, 90170 Étueffont
+33 (0)3 84 54 60 41

Musée Agricole départemental (Farm House)

5 Rue de Dorans, 90400 Botans
+33(0)3 84 36 52 04

Musée de l'Artisanat et des Traditions (Crafts & Traditions)

3 Rue de la Fontaine, 90140 Brebotte
+33 (0)3 84 23 42 37

Moulin de Courtelevant (Windmill)

10 Rue de l'église, 90100 Courtelevant
+33 (0)6 50 12 47 69

Musée Japy

16 Rue Frédéric Japy, 90500 Beaucourt
+33 (0)3 84 56 57 52

♥ _ BELFORT'S PASS MULTISITES

Visit all of Belfort's sites with a single pass. The Pass Multisites includes the Citadel and Augmented Reality Tour, the Lion, the History Museum, Fine Art Museum, Modern Art Museum and Tower 46. One-year validity. Contact the Tourist Information Centre or look up www.belfort-tourisme.com

📍 _ OTHER TOURIST PASSES

Other regional, interregional and even international tourist passes are available. These grant free, limited or unlimited admission to many sites and museums. Validity ranges from one day to one year. For more information please contact the Tourist Information Centre or look up www.belfort-tourisme.com

CULTURAL CENTRES

Espace multimédia Gantner

1 Rue de la Varonne, 90140 Bourogne
+33 (0)3 84 23 59 72

Planétarium

Rue Jean Pierre Melville
+33 (0)7 83 33 96 76

CINEMAS

Cinéma Pathé

1 Boulevard Richelieu, 90000 Belfort
www.cinemaspathegaumont.com

★ *Arthouse films with Cinéma d'Aujourd'hui and 4DX motion-enhanced films are also available.*

Halle des 5 Fontaines

1 Rue Jules Joachim, 90100 Delle
www.delle-animation.com

FAIRS AND SHOWS VENUES

Centre de Congrès Atria

1 Avenue de l'Espérance, +33 (0)3 84 58 85 00

L'Atraxion (parc des expositions)

ZAC des Prés, 90400 Andelnans
+33 (0)3 84 22 00 22

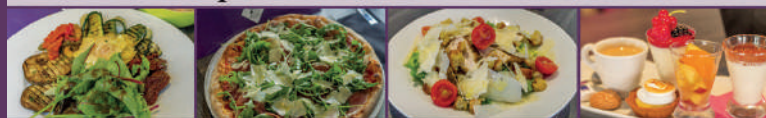
Salle des Fêtes

11 Place de la République, +33 (0)3 84 54 24 24

AU COEUR DE LA VIEILLE VILLE
CUISINE ITALIENNE ET DE SAISON



Antipasti - Pizza au feu de bois



Pâtes fraîches - Dolce maison

OUVERT 7J/7 MIDI ET SOIR

11 RUE DU QUAI - 90000 BELFORT
TÉL. 03 84 29 99 67

THEATRE, DANCE AND MUSIC VENUES

Caveau des Remparts

Place de la République, 90100 Delle
+33 (0)3 84 56 23 30

Espace La Savoureuse

6/8 rue des Casernes, 90200 Giromagny
+33 (0)3 84 29 03 90

Halle des 5 Fontaines

1 Rue Jules Joachim, 90100 Delle
www.delle-animation.com

La Maison de Beaucourt

Place Salengro, 90500 Beaucourt
+33 (0)3 84 56 96 94

La Maison du Peuple

1 Place de la Résistance, 90000 Belfort
+33 (0)3 84 54 25 04

La Poudrière

7 Avenue Maurice Sarraïl, 90000 Belfort
+33 (0)3 84 58 11 77

Le Granit – Scène Nationale

1 Fbg de Montbéliard, 90000 Belfort
+33 (0)3 84 58 67 67

Salle de spectacle de Grandvillars

Rue des Grands Champs, 90600 Grandvillars
+33 (0)3 84 54 01 02

Théâtre des Marionnettes

30 bis Rue Jean de la Fontaine, 90000 Belfort
+33 (0)3 84 28 99 65

Théâtre Louis Juvet

Place du Forum, 90000 Belfort
+33 (0)3 24 22 04 38

Tréteaux 90 - Théâtre Michel Dèque

2 Rue James Long, 90000 Belfort
+33 (0)3 84 22 66 76

ViaDanse, Centre Chorégraphique National de Bourgogne-Franche-Comté

3 Avenue de l'Espérance, 90000 Belfort
+33 (0)3 84 58 44 88



#POUDRIERE
#CONCERT



#VIADANSE
#PERFORMANCE



#THEATRE
#PUPPETS



Mémé Liesel
Restaurant traditionnel
Spécialités françaises et alsaciennes

Cuisine faite maison
& Terrasse d'été ombragée

*Ouvert du mercredi midi au dimanche soir inclus
A 5 minutes de la vieille ville / Parking sur place*

51 avenue d'Alsace 90160 DENNEY 03 84 29 82 91
www.restaurant-meme-liesel.fr

SPORT & LEISURE

GOLF & MINIGOLF

Golf de Rougemont

Route de Masevaux, 90110 Rougemont-le-Château
+33 (0)3 84 23 74 74

Minigolf

2, Rue de l'Église - 90340 Chèvremont
+33 (0)3 84 21 08 56

Minigolf au Malsaucy

90300 Sermamagny - www.territoiredebelfort.fr

ICE-SKATING



Patinoire de l'agglomération belfortaine

Parc des Loisirs, Rue des Carrières, 90850 Essert
+33 (0)3 70 04 80 40

TREETOP ADVENTURES

Acropark - Ballon d'Alsace

Plain de la Gentiane, 90200 Lepuix - + 33 (0)6 84 67 68 58

Bavilliers Aventures

90800 Bavilliers - +33 (0)3 84 57 38 78

IN THE AIR

Aéroclub de Chaux

52 Grande rue, 90330 Chaux - +33 (0)3 84 29 21 44

Association Vols Passion

24 Rue de la Méchelle, 90000 Belfort
+33 (0)6 62 55 39 18

Ballooning Adventures

4 Rue des Champs, 90800 Bavilliers
+33 (0)6 86 48 24 65

Club Aérostatique de Franche-Comté

24 Rue des Vosges, 90150 Foussemagne
+33 (0)3 84 90 20 20

Les bulles libres

7 Rue des Églantiers, 90400 Bermont
+33 (0)7 83 68 66 98

GO-KARTING

Kart 90

Chemin du Circuit Eisen, 90340 Chèvremont
+33 (0)6 61 86 88 55

SWIMMING AND BOATING

Base nautique et plage du Malsaucy

90300 Évette-Salbert - +33 (0)3 84 90 90 10

Centre Aquatique

Fbg de Belfort, 90100 Delle

+33 (0)3 84 36 64 00

Piscine Béatrice Hess

Grande Rue, 90170 Étueffont

+33 (0)3 84 54 72 40

Piscine du Parc

1 Parc des Loisirs, 90800 Bavilliers

+33 (0)3 70 04 80 30

Piscine Pannoux

Boulevard Richelieu - +33 (0)3 70 04 80 50



HORSE-RIDING

Au pré des poneys je vivrai heureux

5 rue Fontenottes, 90200 Grosmagny

+33 (0)6 07 10 28 12

Centre équestre des Prés Heyds

6 Rue d'Auxelles, 90200 Giromagny

+33 (0)3 84 29 31 47

Centre hippique

Résidence Domaine du Chênois, 90800 Bavilliers

+33 (0)3 84 21 23 07

Écurie de l'Allaine

66 Chemin de la Brasserie, 90100 Thiancourt

+33 (0)6 79 99 08 69

Écurie des Beaux prés

90100 Fêche-l'Église

+33 (0)3 84 36 07 25

Écurie des p'tits bouts

Rue de Fontenelle, 90340 Chèvremont

+33 (0)6 49 84 05 64

Equinoxe équitation

10 Rue de Bellevue, 90300 Lachapelle-sous-Chaux

+33 (0)3 84 29 12 45

Équitation passion

Rue de Fontenelle, 90340 Chèvremont

+33 (0)3 84 58 04 37

Ferme équestre de la Forge

13 Rue de Lamadeleine, 90170 Étueffont

+33 (0)6 84 83 53 56

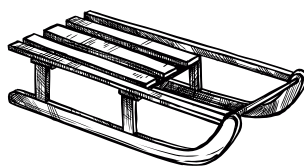
WINTER RESORT

Ballon d'Alsace

90200 Lepuix - +33 (0)3 29 25 20 38



In the winter season, the Bus du Ballon is the safe and easy way to get from Belfort to the Ballon d'Alsace. For more information please contact the Tourist Information Centre or look up: www.belfort-tourisme.



GAMES & LEISURE

Bowling des 4AS

Centre commercial 4 As, 90000 Belfort
+33 (0)3 84 54 04 47

Cani-rando - La Légende du Loup Noir

Chemin de la goutte des forges, 90200 Lepuix
+33 (0)3 84 29 31 41

Croco-Kid

ZAC de la Justice, 4 Rue Georges Besse, 90000 Belfort
+33 (0)3 84 22 19 15

Escape Hunt (Escape Game)

8 Rue du 21 Novembre, 90400 Danjoutin
+33 (0)3 84 46 29 05

Happy Park

31 Avenue Capt de la Laurencie, 90000 Belfort
+33 (0)3 84 58 08 08

La Clé du Bastion (Escape Game)

Tour 27, Rue des Bons Enfants, 90000 Belfort
www.lacledubastion.com

La Meute du Ballon

Route du Ballon d'Alsace, 90200 Lepuix
+33 (0)6 08 17 56 85 *Text messages only*

Lords of Paintball

90120 Morvillars - +33 (0)6 41 61 06 18

Maison Départementale de l'Environnement

7 Rue du Malsaucy, 90300 Sermamagny
+33 (0)3 84 29 18 12

Mille et un Jeux (Escape Game & Board Game Bar)

59 Route de Vourvenans, 90400 Trévenans
+33 (0)3 84 58 57 96

Neocenter

5 Route de Montbéliard, 90400 Andelnans
+33 (0)3 84 22 76 49

Paintball Belfort

Rue de Danjoutin, 90400 Vézelois
+33 (0)6 86 53 28 18

Worms Paintball

90400 Moval - +33 (0)7 81 35 96 94

RENT A BIKE



Camping de l'Étang des Forges

Rue du Général Bethouart, 90000 Belfort
+ 33 (0)3 84 22 54 92

Chaum'bike

5027 Route du Ballon d'Alsace - 90200 Lepuix
+33 (0)3 84 21 73 44

FISHING

For more information:
www.territoiredebelfort.federationpeche.fr



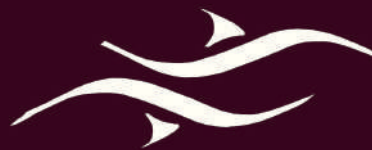
Salon de café
Petit-déjeuner
Brunch
& Petite resto'
...

(tout est fait maison)



Du mercredi au samedi
9h à 18h

Face à l'Office du tourisme
09.81.98.51.26



Le saut de la truite

HOSTELLERIE DE BIEN-ÊTRE

BAINS NORDIQUES • TEPIDARIUM • TOUR DE SEL



POUR UN SÉJOUR EMPREINT
DE SÉRÉNITÉ ET
D'ÉCOLOGIE AU COEUR
DU BALLON D'ALSACE

SPA • HAMMAM • SALLE DE REPOS • SAUNA

112 ROUTE DU BALLON D'ALSACE 90200 LEPUIX
TÉL: 09 72 26 90 99 • CONTACT@HOTEL-SAUT-DE-LA-TRUITE.FR
WWW.SAUTDELATRUITE.FR

Bureau
3 montagne
Ballon
Alsace

Individuels
Groupes
Scolaires
Séminaires
www.bmba.fr
06 88 18 39 48

Nos activités:

Randonnées

Rand' apéro

Géocaching

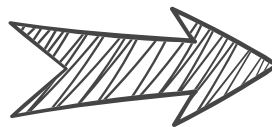
Séjours hamacs

VTT à assistance électrique

Levé du soleil en compagnie des chamois

OTHER PLACES TO VISIT

FURTHER AFIELD



MASSIF DES VOSGES

The Vosges Mountains are a nature conservation reserve with boreal bogs, a protected wildlife – lynx, chamois, capercaillie – deep evergreen forests, and a generous and welcoming people. The Massif is also a paradise for outdoor activities – downhill and cross-country skiing, skydiving, rock-climbing, horse-riding, high-rope climbing and more.



RONCHAMP

Hill Notre-Dame du Haut, overlooking the small town of Ronchamp, is an iconic landmark of modern architecture. It has been the site of Marian pilgrimages since time immemorial.

It was in 1955 that Le Corbusier inaugurated his masterpieces on the Hill : Notre-Dame du Haut Chapel, two living houses and the Peace Pyramid. Today they are registered UNESCO World Heritage.

The architect Jean Prouvé designed the Bell Tower in 1975 while in 2011 the Italian architect Renzo Piano designed the Gate House (Porterie) and the Monastery of Saint-Clare for the Poor Clare nuns.

Coming to Ronchamp is stepping into a place of great historical, artistic and spiritual value.



MONTBÉLIARD

The neighbouring Pays de Montbéliard has a unique historical heritage, a dynamic art scene, good restaurants and leisure activities for all ages and tastes. Going on a day-trip there is to explore a land of industrial excellence and wide open spaces close to Switzerland in the Montagnes du Jura.



ALSACE & THE SUNDGAU

At a crossroad between Switzerland, Germany and Franche-Comté, the Sundgau is an open invitation to visit with its lush, green valleys and rich historical heritage. A stone's throw away from Belfort, you will discover totally different landscapes, a different language and culture. The region has retained much of its historical charm with its many castles, windmills, traditional farmhouses and half-timbered houses.



SWITZERLAND & GERMANY

A day trip to the Swiss Jura via Porrentruy, Sainte-Ursanne and Délémont offers a guaranteed change of scenery. Basel in Switzerland and Freiburg in Germany are two lively, historical cities only an hour away from Belfort.



THINGS TO DO ON A RAINY DAY



AROUND BELFORT

Bowling & Laser Game Neocenter
in Andelnans

Écurie des p'tits bouts in Chèvremont

Escape Games

Mille et un Jeux in Trévenans
& Escape Hunt in Danjoutin

Espace multimédia Gantner

Contemporary art centre and centre
of pedagogic multimedia resources

Forge-Musée in Etueffont

Moulin (windmill) de Courtelevant

Musée Agricole départemental in Botans

Musée de l'Artisanat & des Traditions in Brebotte

Japy Museum in Beaucourt

Médiathèques (multimedia resource centres)

Swimming pools in Delle and Etueffont



IN BELFORT

Bowling des 4 As

Cinéma Pathé

Escape Game La clé du Bastion

Temporary exhibitions

Hôtel du Département, Tower 46,
libraries, theatre Le Granit

Art Galleries Cheloudiakoff & Robet-Dantec

Modern Art Museum – Donation Jardot

Fine Art Museum – Tower 41

History Museum

Children's indoor play areas

Croco-kid & Happy Park

Ice-Skating Rink

Swimming Pools

Planétarium

THE TOURIST INFORMATION CENTRE AT YOUR SERVICE

TOURIST INFORMATION

Our advisers welcome you in the listed, historical Hôtel du Gouverneur building in Belfort's Old Town. Get all the information you need and some top tips on what to do and what's on to make the most of your stay.

SOUVENIRS AND LOCAL PRODUCE

Souvenirs in the effigy of the Lion, local produce, hand-made gifts and an exclusive range of clothing #StayWildBelfort are available in our in-house souvenirs shop and boutique.

TICKETING

Ticketing is available for the Little Tourist Train, ski passes, Eurockéennes festival, museum and tourist passes, Optymo buses, the Swiss motorway vignette and more.

POSTAL SERVICES

Buying stamps, sending and receiving parcels or registered mail are just a few of the postal services available in our visitor centre. The Post Office counter is open from Monday afternoon to Friday afternoon.

THE CHILDREN'S PLAY AREA

The Grand Belfort area has been labelled Famille Plus since 2019. Families can use the dedicated children's play area in our premises. Books, games and toys are available for our younger tourists.

EXHIBITIONS

Art exhibitions are held throughout the year in our visitor information centre. Painting, sculpture, photography – come and discover the work of our talented, local artists.



BELFORT TOURISME

2 place de l'Arsenal, 90000 Belfort

+33 (0)3 84 55 90 90
accueil@belfort-tourisme.com
www.belfort-tourisme.com

GUIDED TOURS

Do you want to get more out of your stay? Scheduled guided tours – **Escapades Patrimoniales** and **Échappées Terrifortaines** – are organised from April to December by the Tourist Information Centre. Pick up the leaflet in our visitor centre or download it from www.belfort-tourisme.com



**BANQUE, ASSURANCE,
TÉLÉPHONIE...
GAGNEZ À COMPARER !**

Crédit  Mutuel

Le Crédit Mutuel, banque coopérative, appartient à ses 7,9 millions de clients-sociétaires.

Caisse Fédérale de Crédit Mutuel et Caisses affiliées, société coopérative à forme de société anonyme au capital de 5 458 531 008 euros, 4 rue Raiffeisen, 67913 Strasbourg Cedex 9, RCS Strasbourg B 588 505 354 – N° ORIAS : 07 003 758. Banques régies par les articles L.511-1 et suivants du code monétaire et financier.